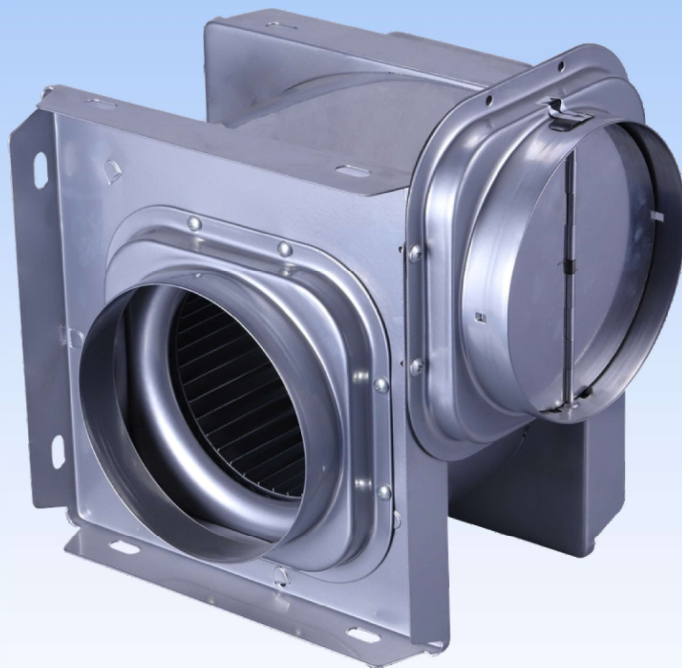




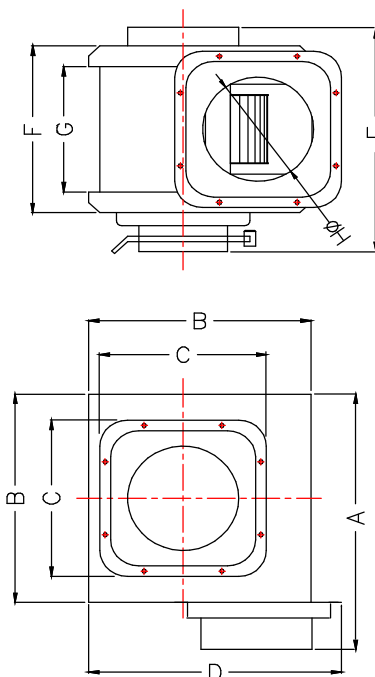
KMS Series

MINI SIROCCO FANS



Features

- Round duct connector for easy connection to flexible hose.
- Built-in backdraft damper to prevent back-flow.
- Robust galvanized steel housing.
- 230V/50Hz motor with thermal cut-off fuse.
- Operating Temperature : -20°C to +55°C
- Outlet direction is adjustable to vertical or horizontal position.



Dimension

Model	A	B	C	D	E	F	G	H	Weight (kg)
KMS 100	220	180	135	205	185	135	80	95	2.4
KMS 200	220	180	135	205	185	135	80	95	2.4
KMS 450	300	250	180	290	230	186	120	145	6.0
KMS 630	355	300	235	355	285	235	165	198	9.4
KMS 900	355	300	235	355	290	235	165	198	9.4
KMS 1600	385	330	230	385	320	240	190	198	14.0
KMS 2000	460	380	280	440	350	280	190	248	19.0

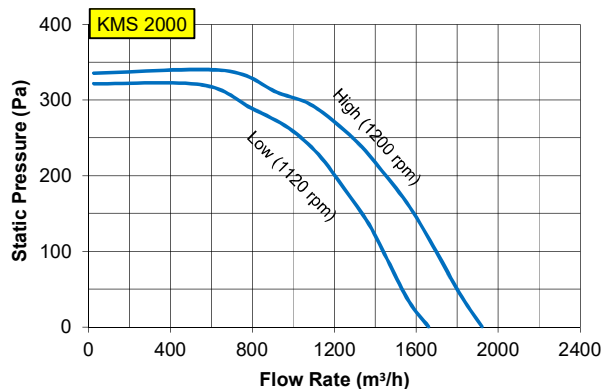
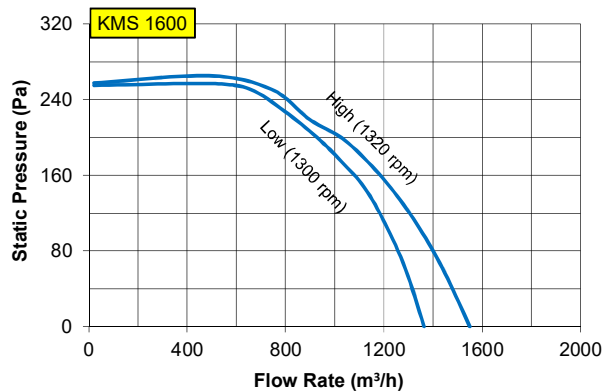
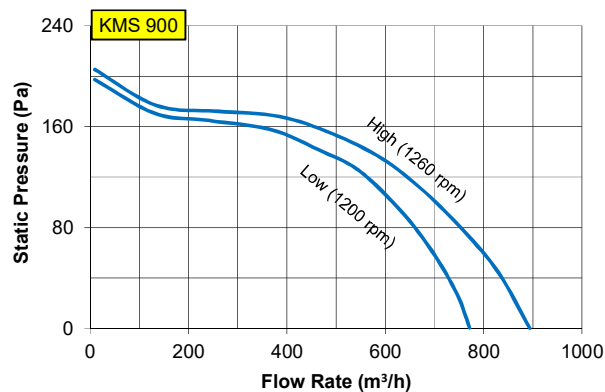
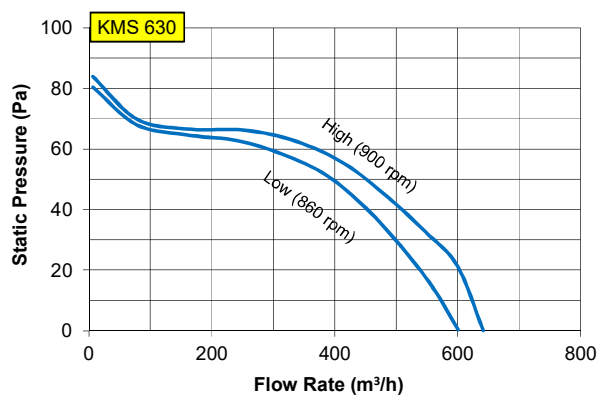
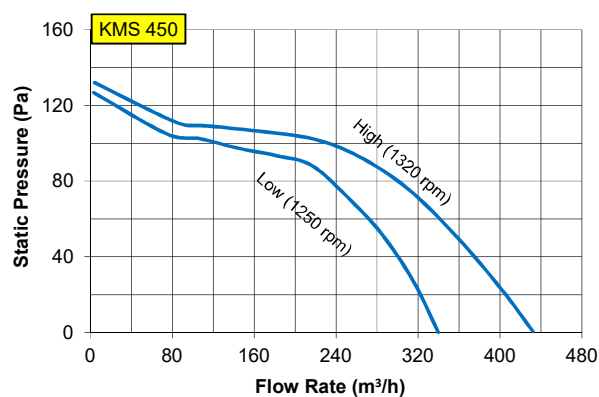
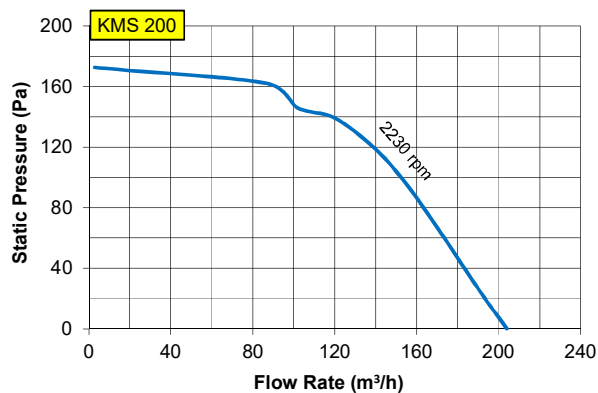
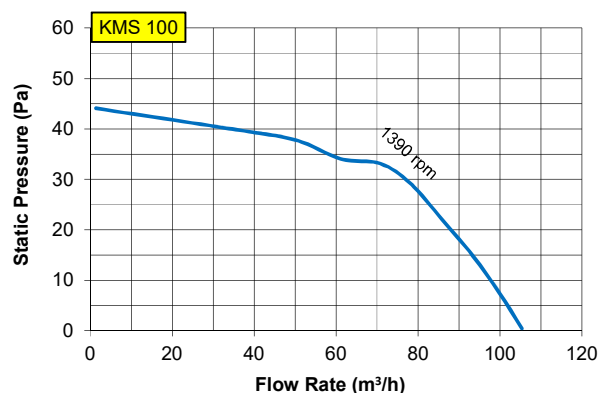
All dimension in mm.

Technical Data

Model	Maximum Flow rate (m³/h)	Maximum Pressure (Pa)	Input Power (W)	Energy Efficiency (CMH / W)	Motor Protection	Phase	N° Pole	Hz	Maximum Current (A)	Voltage (V)	Insulation Class	Sound level (dB(A))	Speed (RPM)	Duct Size (mm)
KMS 100	105	44	21	4.9	IP42	1	4	50	0.09	230	B	50	1390	100
KMS 200	204	173	51	4.0	IP42	1	2	50	0.23	230	B	64	2230	100
KMS 450	340	127	45	7.5	IP42	1	4	50	0.20	230	B	54	1250	150
	432	132	53	8.1					0.24			58	1320	
KMS 630	601	80	56	10.8	IP42	1	4	50	0.28	230	B	55	860	200
	642	84	73	8.8					0.33			58	900	
KMS 900	772	197	122	6.3	IP42	1	4	50	0.54	230	B	64	1200	200
	894	205	140	6.4					0.61			68	1260	
KMS 1600	1363	255	319	4.3	IP42	1	4	50	1.54	230	B	71	1300	200
	1549	257	338	4.6					1.49			77	1320	
KMS 2000	1660	322	339	4.9	IP42	1	4	50	1.50	230	B	72	1120	250
	1920	336	418	4.6					1.83			77	1200	

- Inlet Lp(A) sound pressure levels at 1.5 m are measured at free discharge in spherical free field condition.
- Performance certified is for installation type B – Free inlet, Ducted outlet.
- Performance ratings do not include the effects of appurtenances (accessories).
- Speed (RPM) shown is nominal. Performance is based on actual speed of test.

Performance



- Performance certified is for installation type B – Free inlet, Ducted outlet.
- Performance ratings do not include the effects of appurtenances (accessories).
- Speed (RPM) shown is nominal. Performance is based on actual speed of test.